

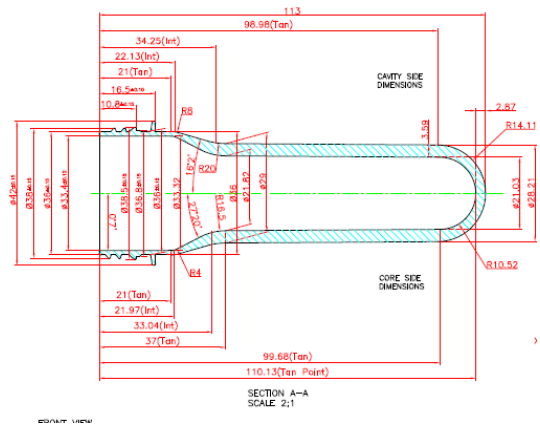
Preforms from Stock

PET All Manufacturing Inc has partnered with a large preform supplier from the Middle East to import high-quality preforms into North America. These parts are made on the best Western equipment, performing as well or better than preforms made here. By taking advantage of low energy costs and the traditional low transportation cost we can you bring excellent value.

We'll take care of all shipping, brokerage, and duty (taxes extra as they vary between different areas) and deliver the preforms to your door.

We have a large selection of stock items but are able to offer customized solutions and rPET preforms as well.

Below is a selection of our stock preforms.



29/25 Short Neck



Preform weight (g)	Preform length (mm)	Number of Pieces in Octabin L100, W120, H114 (cm)	Number of Pieces in Carton L59, W41, H43.5 (cm)	No of Octabins in 40' HC Container	No of Cartons in 40' HC Container	No of Octabins in 15m Trailer	No of Carton boxes in 15m Trailer	
1	6.50	50.4	36,500	2,900	42	624	52	650
2	7.50	50.4	36,500	2,900	42	624	52	650
3	8.30	66.6	29,000	2,300	42	624	52	650
4	9.00	66.6	29,000	2,300	42	624	52	650
5	10.10	66.6	29,000	2,300	42	624	52	650
6	10.40	70.1	28,000	2,000	42	624	52	650
7	11.40	70.1	28,000	2,000	42	624	52	650
8	12.50	77.4	22,000	1,800	42	624	52	650
9	13.60	84.1	19,000	1,700	42	624	52	650
10	23.80	115.1	10,500	850	42	624	52	650
11	25.80	115.1	10,500	850	42	624	52	650
12	27.50	115.1	10,500	850	42	624	52	650

30/25 High Neck



	Preform weight (g)	Preform length (mm)	Number of Pieces in Octablin L100, W120, H114 (cm)	Number of Pieces in Carton L59, W41, H43.5 (cm)	No of Octabins in 40' HC Container	No of Cartons in 40' HC Container	No of Octabins in 15m Trailer	No of Carton boxes in 15m Trailer
1	11.50	72.5	23,000	2,000	42	624	52	650
2	14.00	81.7	19,500	1,600	42	624	52	650
3	16.00	90	17,500	1,400	42	624	52	650
4	17.00	90	17,500	1,400	42	624	52	650
5	30.00	121	9,500	800	42	624	52	650
6	32.50	121	9,500	800	42	624	52	650
7	34.00	121	9,500	800	42	624	52	650

28mm PCO 1810 High Neck



Product Name	Neck Size	Weight (g)	Volume (ml)	Bottle Dimensions	
				Bottom (mm)	Height (mm)
1 Round 220ml Juice	28 PCO 1810 High Neck	15.53	220	Ø52	157
2 Round 228ml Juice/CSD	28 PCO 1810 High Neck	15.53	228	Ø54	157
3 Round 1000ml Juice	28 PCO 1810 High Neck	39.3	1000	Ø79	286
4 Round 1500ml Juice	28 PCO 1810 High Neck	54	1500	Ø84	324

28mm PCO 1881 Short Neck



	Preform weight (g)	Preform length (mm)	Number of Pieces in Octablin L100, W120, H114 (cm)	Number of Pieces in Carton L59, W41, H43.5 (cm)	No of Octabins in 40' HC Container	No of Cartons in 40' HC Container	No of Octabins in 15m Trailer	No of Carton boxes in 15m Trailer
1	22.30	96.7	15,000	1,300	42	624	52	650
2	50.50	147	7,000	600	42	624	52	650

Cold Fill - PET Bottles

38mm 3 Start Neck



Product Name	Neck Size	Weight (g)	Volume (ml)	Bottle Dimensions	
				Bottom (mm)	Height (mm)
1 Round 200ml	38mm 3 Start Neck	15	200	Ø55.9	124.3
2 Round 200ml	38mm 3 Start Neck	15	200	Ø52.6	131.3
3 Round 225ml	38mm 3 Start Neck	15	225	Ø53.9	148
4 Round 300ml	38mm 3 Start Neck	21/24	300	Ø54	163
5 Round 330ml	38mm 3 Start Neck	21/24	330	Ø56.7	169
6 Round 500ml	38mm 3 Start Neck	24	500	Ø67	181.1
7 Round 500ml	38mm 3 Start Neck	24	500	Ø68.5	194
8 Round 500ml	38mm 3 Start Neck	24	500	Ø64	196
9 Round 1000ml	38mm 3 Start Neck	38	1000	Ø84	256
10 Round 1000ml	38mm 3 Start Neck	38	1000	Ø79.8	258
11 Square 250ml	38mm 3 Start Neck	15	250	53.7 x 53.7	131.1
12 Square 330ml	38mm 3 Start Neck	21	330	53.7 x 53.7	163.3
13 Square 500ml	38mm 3 Start Neck	24	500	61.1 x 61.1	188.6
14 Square 1000ml	38mm 3 Start Neck	38	1000	75.4 x 75.4	243
15 Square 1000ml	38mm 3 Start Neck	38	1000	75.2 x 75.2	243.2
16 Square 1600ml	38mm 3 Start Neck	59.2	1600	129.6 x 100.6	260
17 Square 1500ml	38mm 3 Start Neck	59.2	1500	88.2 x 88.2	261
18 Square 1500ml	38mm 3 Start Neck	38	1500	87.6 x 87.6	266

Please contact Rajesh Soni via RSoni@petallmfg.com